



The 2nd International Conference
on Advanced Modelling of Wave Propagation in Solids

September 17-21, 2018

Institute of Thermomechanics, v. v. i.
The Czech Academy of Sciences
Prague, Czech Republic

<http://wavemodelling2018.it.cas.cz>

How to Get Here

Conference Venue

The conference is organized by the Institute of Thermomechanics, the Czech Academy of Sciences, Prague. Details about the Institute are at the website www.it.cas.cz. The conference hall is located at the J. Heyrovsky Institute of Physical Chemistry, <http://www.jh-inst.cas.cz/www/> and around 150 meters close to the Institute of Thermomechanics. The Institute of Physical Chemistry was named after Prof. Jaroslav Heyrovský ([http://en.wikipedia.org/wiki/Jaroslav_Heyrovský](http://en.wikipedia.org/wiki/Jaroslav_Heyrovsky)) who was the inventor of the polarographic method, father of the electroanalytical method, and recipient of the Nobel Prize in 1959.



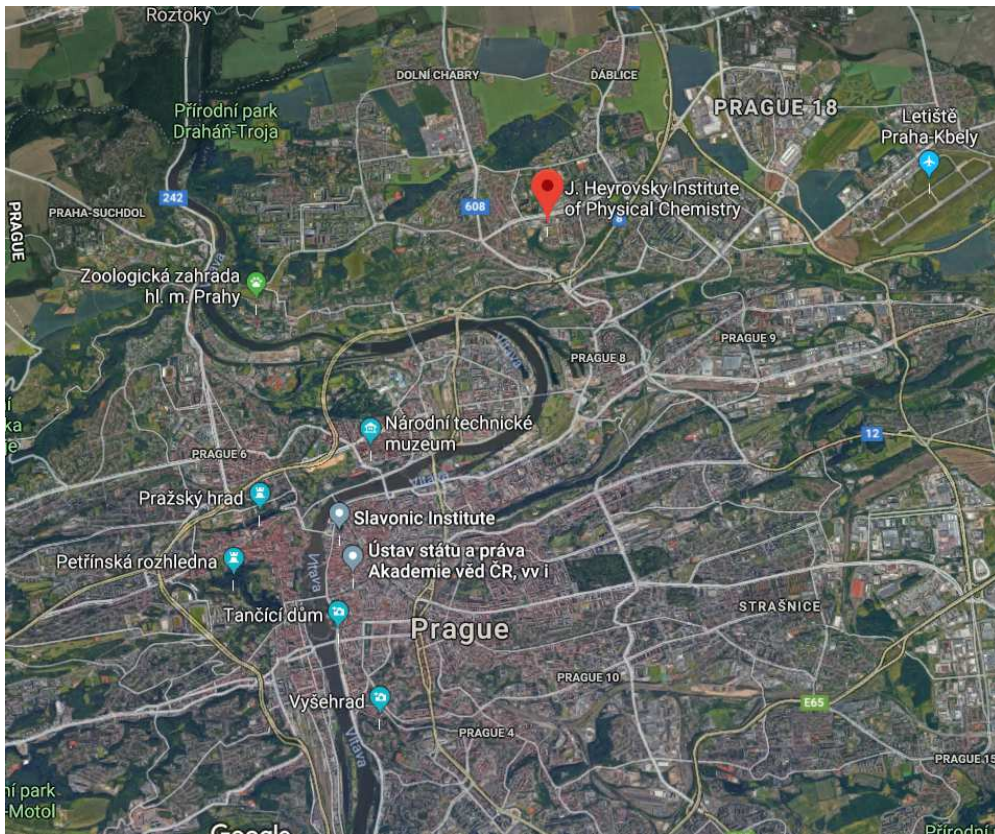
The Institute of Thermomechanics, CAS
and the J. Heyrovsky Institute of Physical Chemistry, CAS (in the background).

Address and contacts

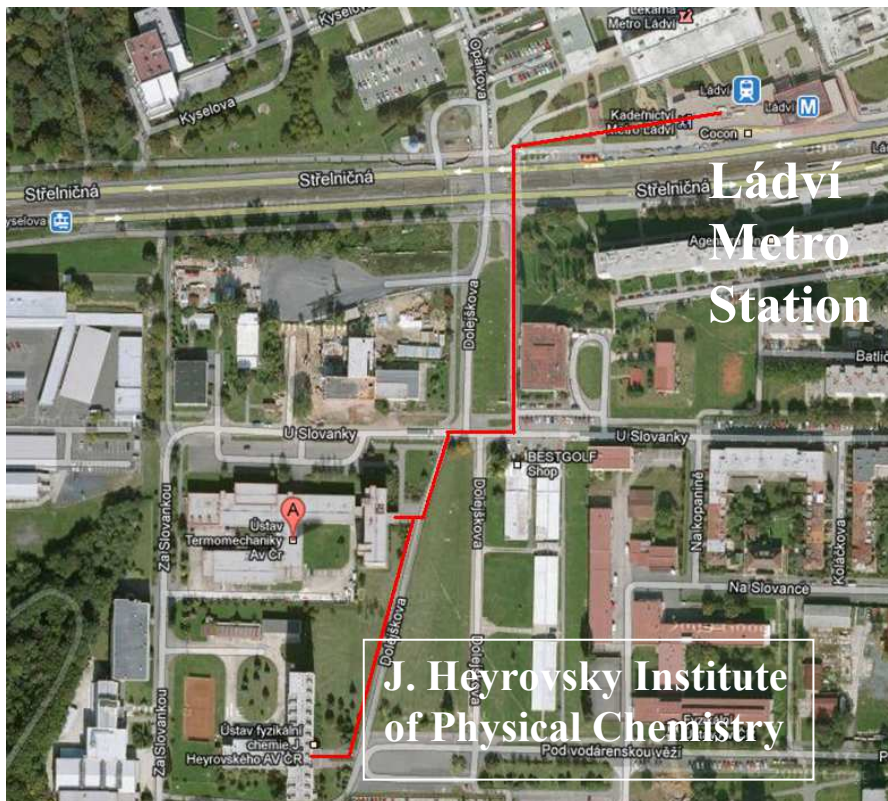
Institute of Thermomechanics
The Czech Academy of Sciences, v.v.i
Dolejšková 1402/5
182 00 Prague 8
Czech Republic

Mobil phone: +420 720 101 837
Phone: +420 266 053 214
Fax: +420 286 584 695

Conference mails - wavemodelling2018@it.cas.cz
Dr. Radek Kolman, IT ASCR, Prague - kolman@it.cas.cz
Dr. Arkadi Berezovski, CENS, Tallinn - Arkadi.Berezovski@cs.ioc.ee



Map of Prague with indicated conference venue.



Route from the Ládvi metro station to the conference venue.

Transportation from the Václav Havel Airport Prague

Historie

[Prague/Ruzyně International Airport](http://en.wikipedia.org/wiki/V%C3%A1clav_Havel) was renamed to the Václav Havel Airport Prague on October 5, 2012. *Remark:* Václav Havel was the ninth and last president of Czechoslovakia (1989–1992) and the first president of the Czech Republic (1993–2003), see http://en.wikipedia.org/wiki/V%C3%A1clav_Havel.

Taxi

A taxi from Prague's Airport directly to the conference area will cost about 700CZK / €28 / \$35. A taxi may be booked on-line through CEDAZ (<http://www.cedaz.cz/public-shuttle-bus-from-airport-to-prague-centre.php>) or Airport Cars (<http://www.airport-cars.cz/>) or you could ask for arranging the transportation in your hotels.

By the regular bus line No. 119 and metro

From **Airport** to the conference area you can take **bus line No. 119** to the **Nádraží Veleslavín** metro station, then use the metro line A (**green**) to **Muzeum** metro station where you should change metro line to C (**red**) to the **Ládví metro station**. This trip takes about 60 minutes.

Regular ticket

The regular ticket for adults (32 CZK) can be bought at the ticket vending machines at the airport bus stop or directly at the bus driver desk. Generally, metro ticket vending machines are installed in all metro stations and at selected surface transit stops.

SMS ticket - number 902 06

In cooperation with all mobile operators, The Prague Transit Co. provides passengers with an SMS ticket service, making it possible to purchase a single transfer ticket using a mobile phone.

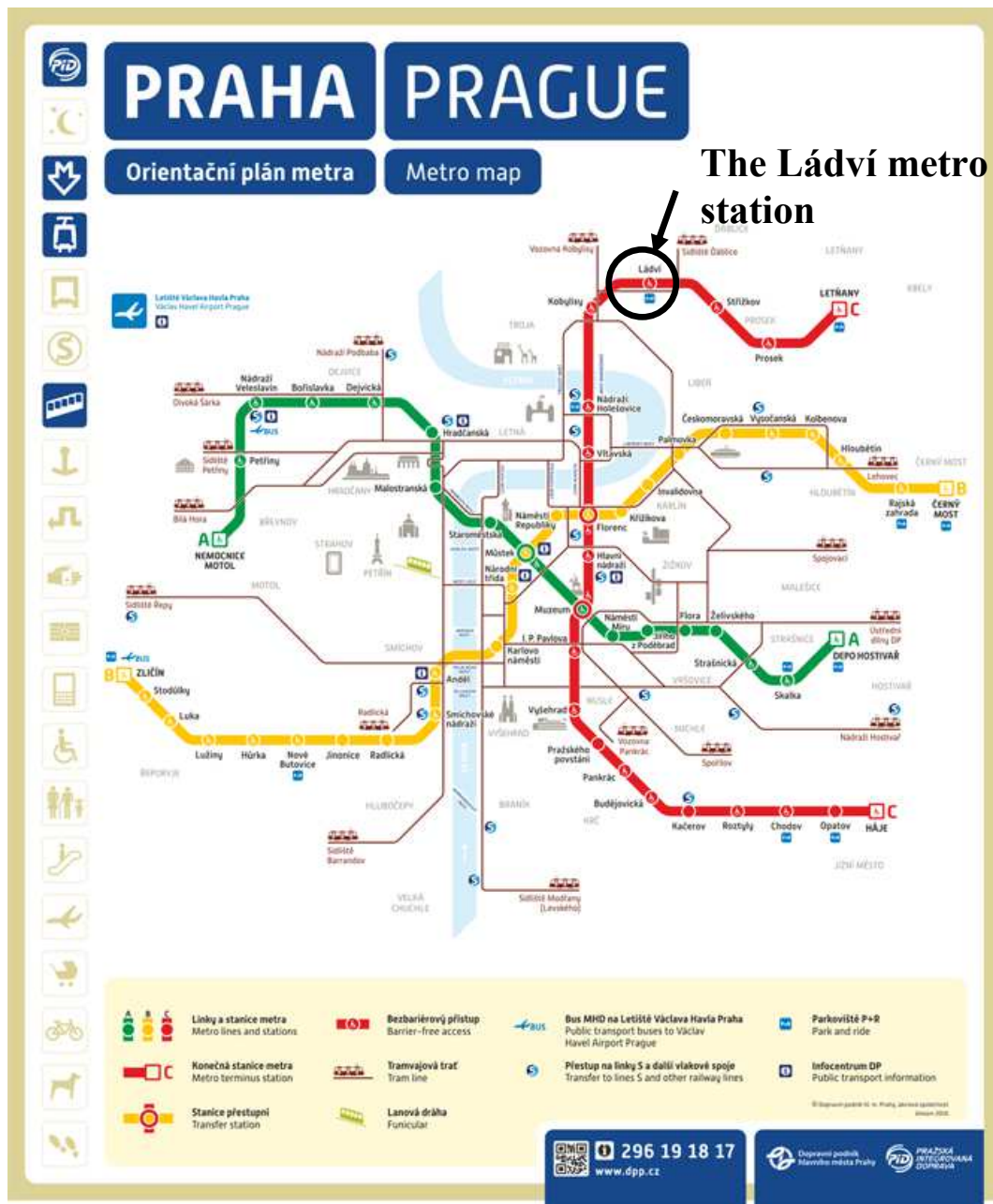
SMS ticket costs 24, 32, 110 or 310 CZK plus you are charged for the outgoing SMS according to the tariff of your mobile phone operator.

SMS text

DPT24 ticket for 30 minutes.
DPT32 ticket for 90 minutes.
DPT110 ticket for 24 hours.
DPT310 ticket for 72 hours.



An example of the SMS for obtaining a 32 CZK Ticket.



Actual scheme of the main Prague public transportation.

Actual basic information about the **Prague Integrated Transport (PIT)**, maps or tickets see at the websites <http://www.dpp.cz/en/> or <http://www.ropid.cz/info/>.

By the Airport Express (AE)

Another possibility is to use the **Airport express line (AE)**

<https://www.pragueairport.co.uk/airport-express-bus/>

Price: 60 CZK

Fares in Prague <http://www.dpp.cz/en/fares-in-prague/>

TICKET TYPE		Adult	Child ***	Senior ***	0 – 6/70+ years of age
Tickets	Basic 90 min.	32 CZK	16 CZK	16 CZK	0 CZK
	Short-term 30 min.	24 CZK	12 CZK	12 CZK	0 CZK
	1 day 24 hrs.	110 CZK	55 CZK	55 CZK	0 CZK
	3 days 72 hrs.	310 CZK	•	•	0 CZK

Metro ticket vending machines are installed in all metro stations and at selected surface transit stops. Tickets are valid for bus lines, trams and underground (Metro). The machine accepts only coins 1, 2, 5, 10, 20 or 50 CZK. Tickets can be also bought at newsagents.

Find a connection in Prague: <http://spojeni.dpp.cz/>

Metro Operating Period: 5:00 - 24:00

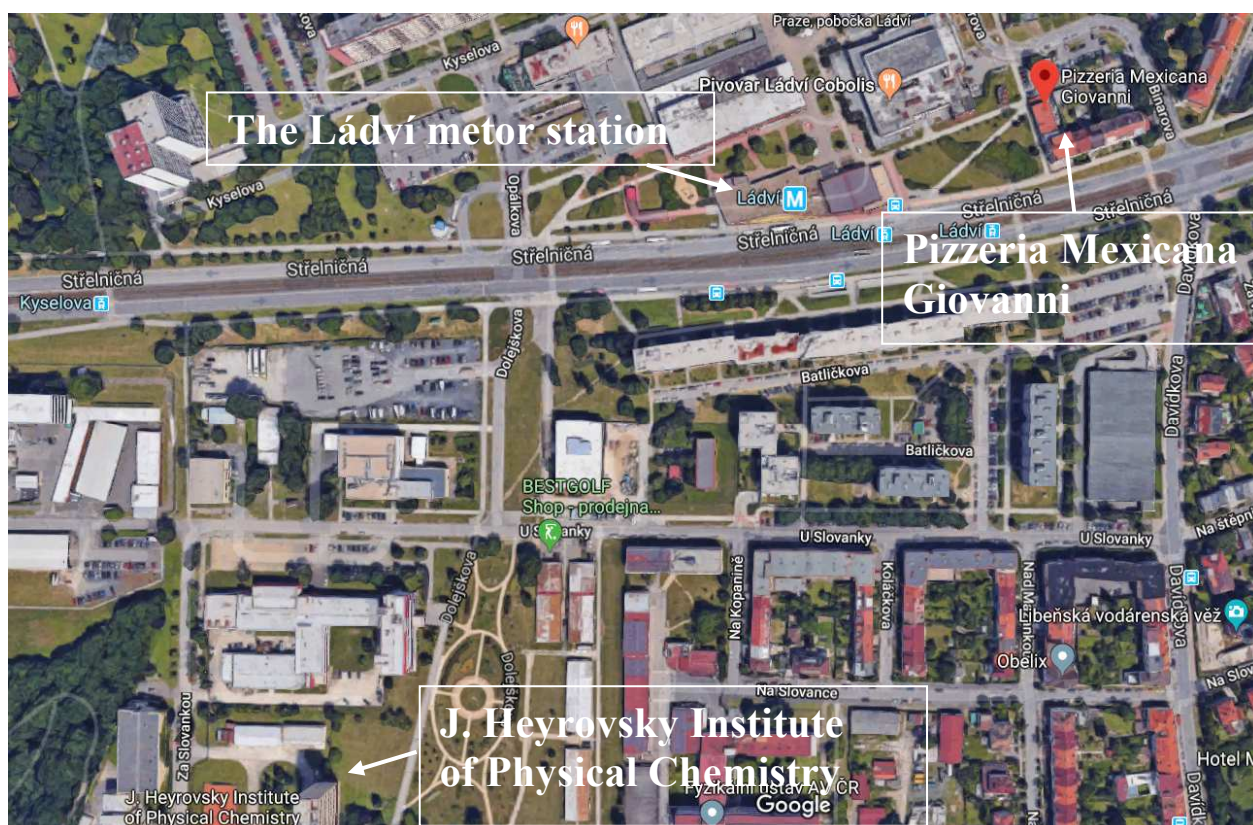
The last metro connection leaves from initial line stations at **24:00**.

REGISTRATION AND USEFUL INFORMATION

Registration

On Sunday, September 16, 2018 - [Pizzeria Mexicana Giovanni](#)

Address: Střelničná 1826/35, 182 00, Praha 8, time **17:00-19:00**



On Monday, September 17, 2018 - the J. Heyrovsky Institute
of Physical Chemistry

7:30-8:30

Opening and welcome

The J. Heyrovsky Institute of Physical Chemistry, **8:30 – 9:00**

Registration fee includes:

- a hard copy of the book of abstracts, the technical program
- a conference bag
- lunches, coffee breaks, small refreshment during coffee breaks
- social events

Fee for accompanying persons includes:

- social events

Lunches

Lunches are given at the LAPÁK restaurant where participants will go together. The journey from the conference venue to the restaurant takes 5 minutes on foot.

Free Wireless Internet at the conference hall and vestibule

Username: **ufch_guest_2.4g**

Password: **guest2018**

Presentation

Presentation will be of **30 minutes duration including 5 minutes long discussion**. One person can be a presenting author. A notebook with the Adobe Reader and MS Power Point programs will be at the disposal. The presenting authors could send a presentation by mail to organizers before the conference.

Social programme

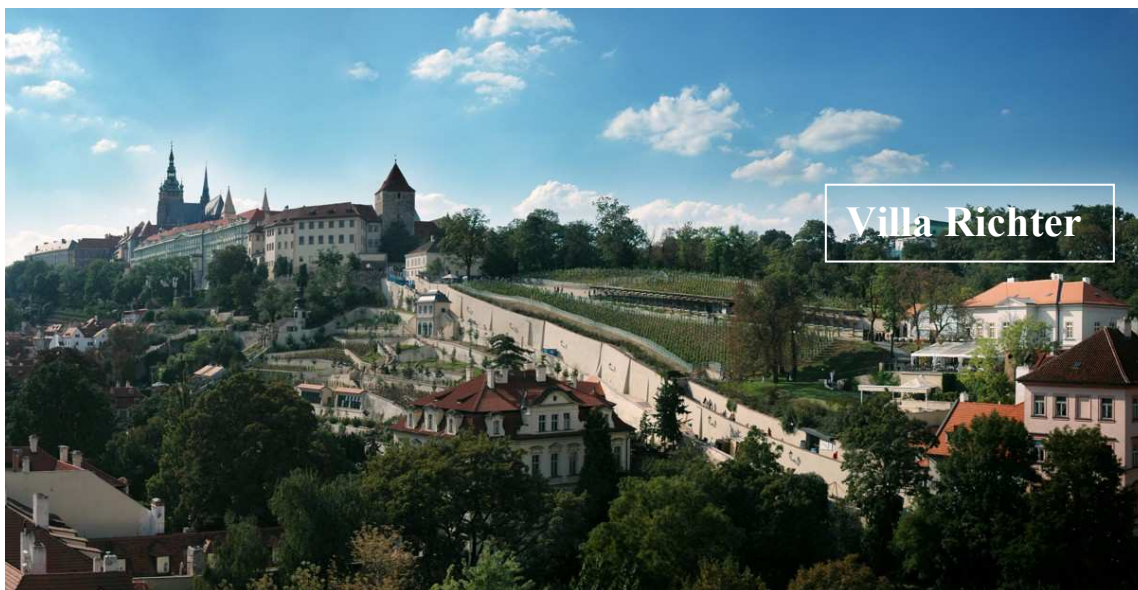
Wednesday, September 19, 2018

The conference banquet takes place at the terrace of the restaurant [Villa Richter](#) on Wednesday, September 19, 2018, at **7PM to 9PM**.

Localisation of the Villa Richter: Staré zámecké schody 6/251, Prague 1, click here. [See map](#)



Connection: from the **Ládvi** metro station to the **Muzeum** metro station (red metro line), continue from the **Muzeum** metro station to the **Malostranská** metro station (green metro line, the direction to the Airport), then go through on foot. **10 minutes**.



General issues

http://en.wikipedia.org/wiki/Czech_republic

<http://en.wikipedia.org/wiki/Prague>

Time zone	Central European Time	CET (UTC+1)
- Summer (DST)	Central European Summer Time	CEST (UTC+2)

The local currency in the Czech Republic is the CZK, the Czech Crown or Kč in Czech.

Rates Table

1 Euro \approx 26.00 CZK, 1 US Dollar \approx 22.50 CZK

Weather/weather forecast in the Czech Republic

<http://www.accuweather.com/en/cz/prague/125594/daily-weather-forecast/125594>

or <http://www.weather-forecast.com/locations/Prague/forecasts/latest>

Recommended restaurants

Pizzeria Giovanni (<http://www.pizzeriagiovanni.cz/>), Hybernia (<http://www.hybernia.cz/>)

U sádlů 2 (<http://www.usadlu.cz/usadlu1/en/index.php>), U Zlaté konvice

(<http://www.ukonvice.cz/home.php?l=1>), Století (<http://stoleti.cz/?lang=en>)

Recommended exchange

Exchange - <http://www.exchange.cz/>

Kaprova 15

110 00 Prague 1 – Josefov, near the Old Town Square

Working hours: Mo - Fr 9:00 - 20:00, Sa, Su, feast day 9:00

- 20:00

Tourist information

Wikipedia, <http://www.prague.cz/>, <http://www.prague.com/>, <http://www.praguewelcome.cz/en/>

and (<http://www.praha.eu/jnp/en/home/index.html>)